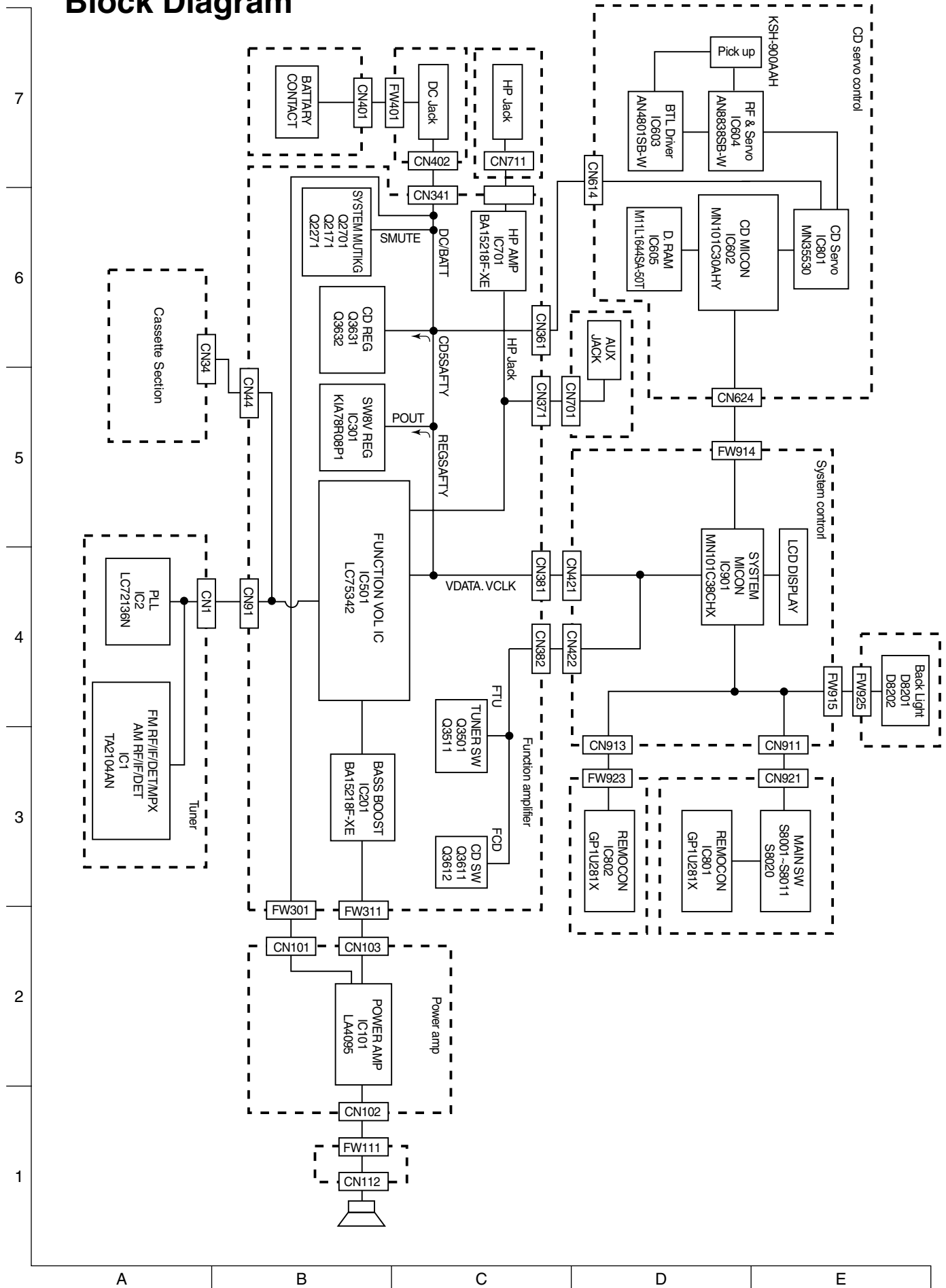


Safety Precautions

In regard with component parts appearing on the silk-screen printed side (parts side) of the PWB diagrams, the parts that are printed over with black such as the resistor (■), diode (▣) and ICP (●) or identified by the "△" mark nearby are critical for safety.

When replacing them, be sure to use the parts of the same type and rating as specified by the manufacturer.
(Except the J and C version)

Block Diagram

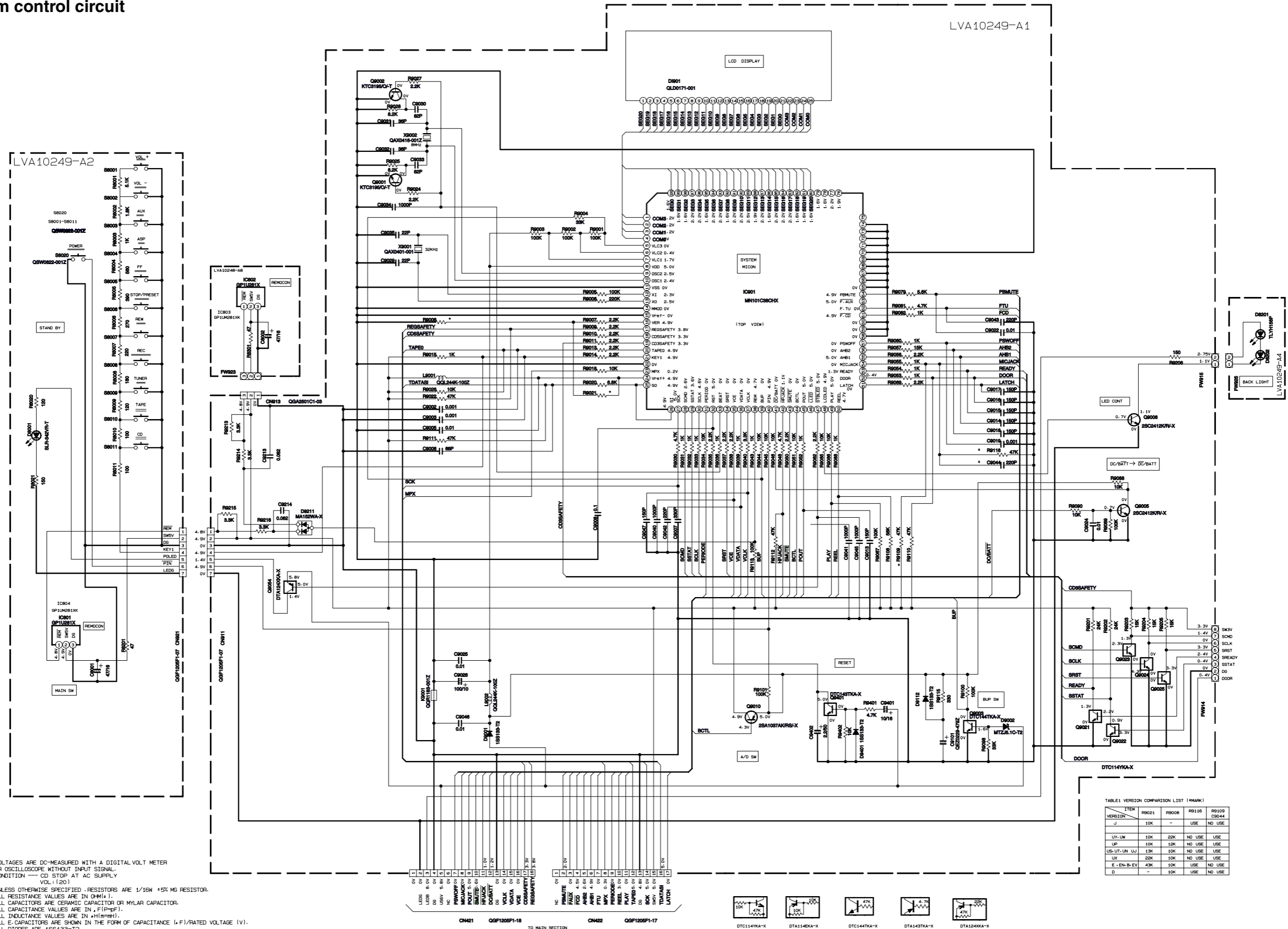


— MEMO —

Standard schematic diagrams

System control circuit

7
6
5
4
3
2
1



NOTES

1. VOLTAGES ARE DC-MEASURED WITH A DIGITAL VOLT METER OR OSCILLOSCOPE WITHOUT INPUT SIGNAL. CONDITION --- CD STOP AT AC SUPPLY VOL: 120V
2. UNLESS OTHERWISE SPECIFIED, RESISTORS ARE 1/16W ±5% MG RESISTOR. ALL RESISTANCE VALUES ARE IN OHM (Ω). ALL CAPACITORS ARE CERAMIC CAPACITOR OR MYLAR CAPACITOR. ALL CAPACITANCE VALUES ARE IN P (pF). ALL INDUCTANCE VALUES ARE IN μH (μH). ALL E-CAPACITORS ARE SHOWN IN THE FORM OF CAPACITANCE (F)/RATED VOLTAGE (V). ALL DIODES ARE 1S5133-T2

TABLE1 VERSION COMPARISON LIST (MARK)

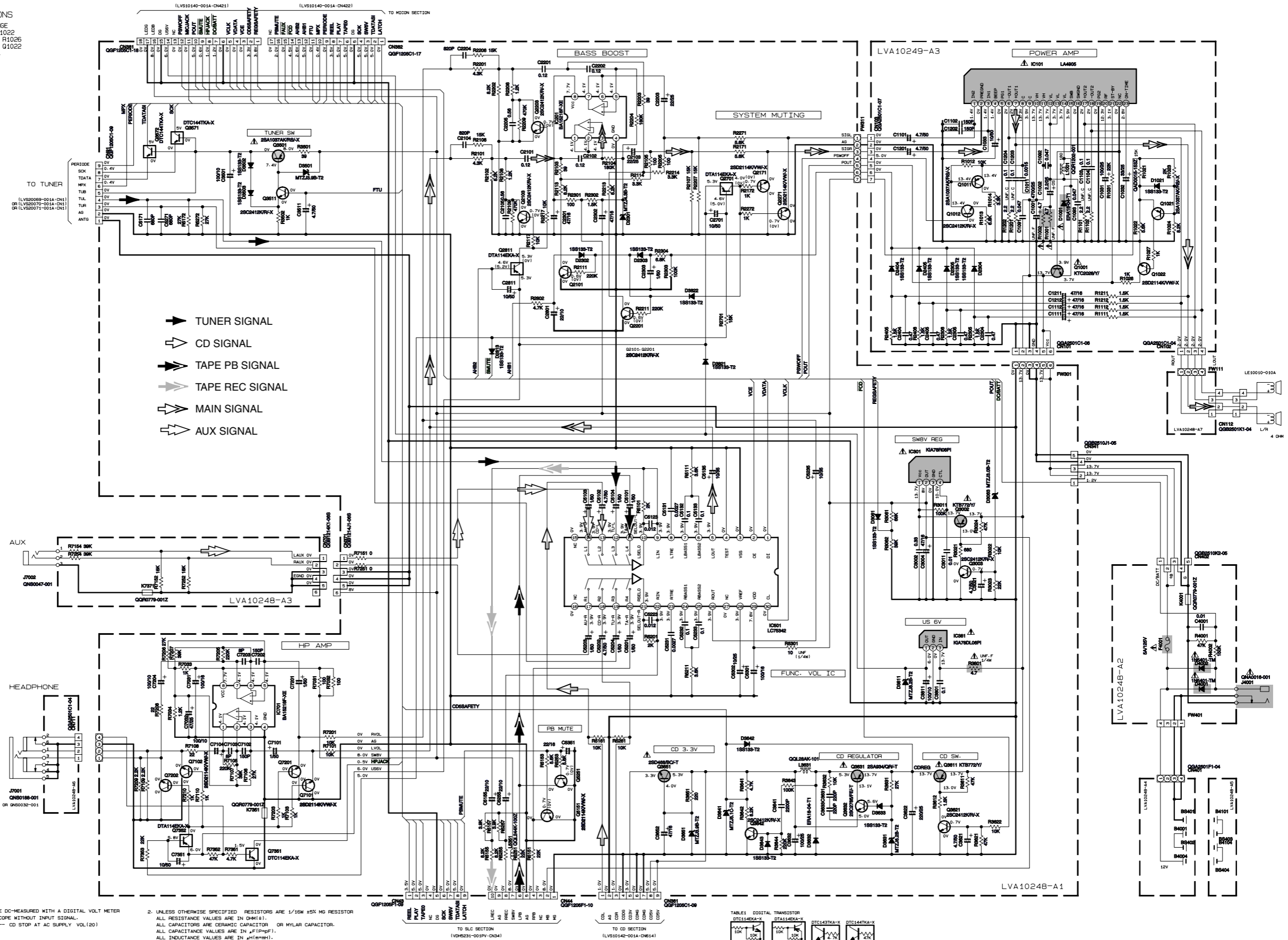
VERSION	ITEM	R0021	R0008	R0116	R0109
J	C0044	10K	-	USE	NO USE
	UV, LW	10K	20K	NO USE	USE
	UP	10K	10K	NO USE	USE
	US, UT, UN, LU	10K	10K	NO USE	USE
	UX	20K	10K	NO USE	USE
	E-EN-B-EV	40K	10K	USE	NO USE
D		-	10K	USE	NO USE



A B C D E F G H I J

Function amplifier circuit

REVISIONS
 RUNNING CHANGE
 ADD R1021 R1022
 R1023 R1024 R1025
 R1027 Q1021 Q1022
 D3063 D1021.



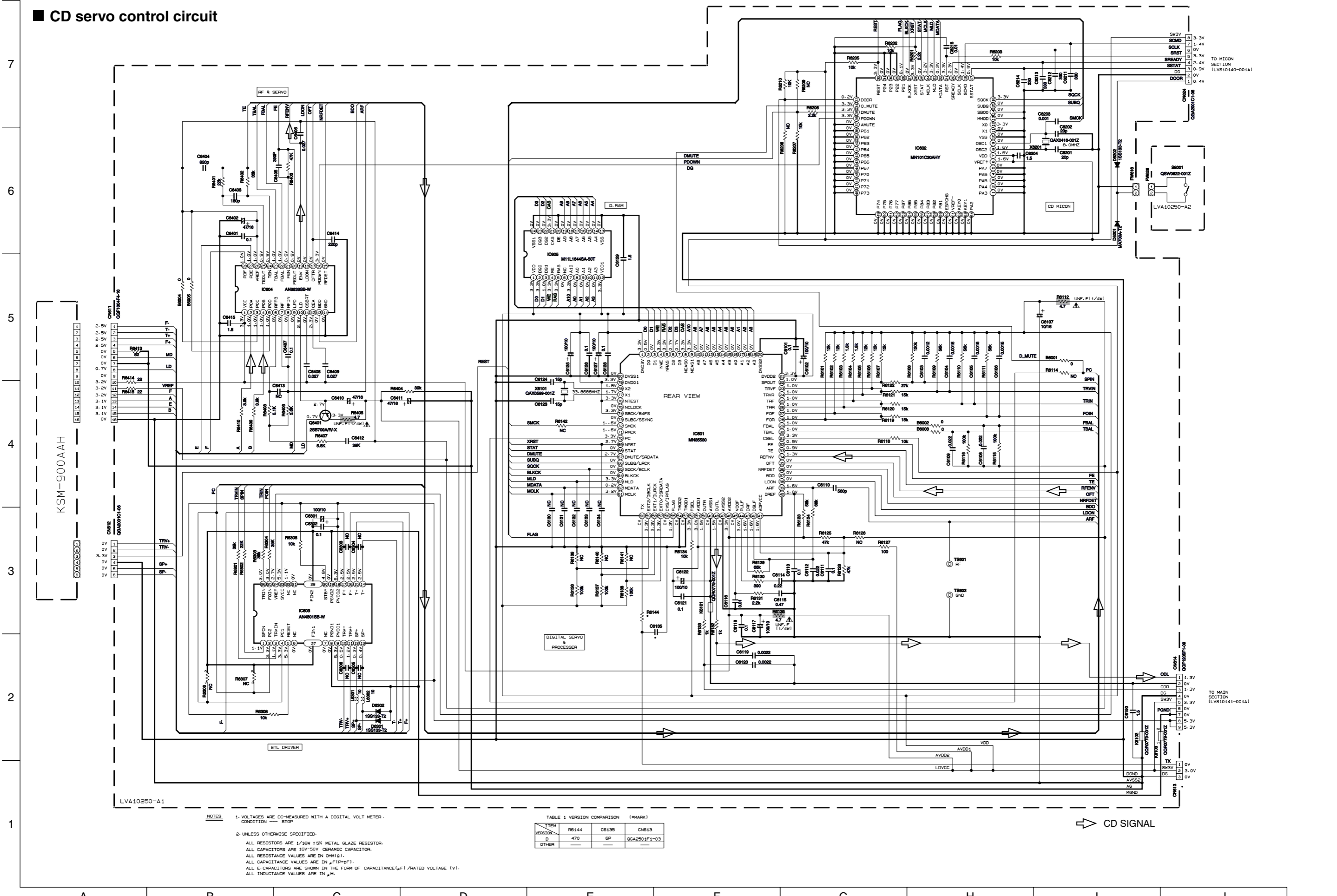
NOTES

- VOLTAGES ARE DC-MEASURED WITH A DIGITAL VOLT METER OR OSCILLOSCOPE WITHOUT INPUT SIGNAL.
 CONDITION — CD STOP AT AC SUPPLY VOL(120)
- UNLESS OTHERWISE SPECIFIED RESISTORS ARE 1/16W ±5% MG RESISTOR
 ALL RESISTANCE VALUES ARE IN OHM(Ω).
 ALL CAPACITORS ARE CERAMIC CAPACITOR OR MYLAR CAPACITOR.
 ALL CAPACITANCE VALUES ARE IN μF(μF-PF).
 ALL INDUCTANCE VALUES ARE IN μH(μH-MH).
 ALL E-CAPACITORS ARE SHOWN IN THE FORM OF CAPACITANCE (μF)/RATED VOLTAGE (V).
 ALL DIODES ARE 1SS133-T2

TABLE 1 DIGITAL TRANSISTOR

DTC144KA-X	DTC144TA-X	DTC144TA-X	DTC144TA-X
------------	------------	------------	------------

CD servo control circuit



LVA10250-A1

- NOTES
1. VOLTAGES ARE DC-MEASURED WITH A DIGITAL VOLT METER. CONDITION --- STOP
 2. UNLESS OTHERWISE SPECIFIED.
 - ALL RESISTORS ARE 1/16W ±5% METAL GLAZE RESISTOR.
 - ALL CAPACITORS ARE 1KV-50V CERAMIC CAPACITOR.
 - ALL RESISTANCE VALUES ARE IN Ω(M).G).
 - ALL CAPACITANCE VALUES ARE IN μF(PHPF).
 - ALL E. CAPACITORS ARE SHOWN IN THE FORM OF CAPACITANCE(μF)/RATED VOLTAGE (V).
 - ALL INDUCTANCE VALUES ARE IN μH.

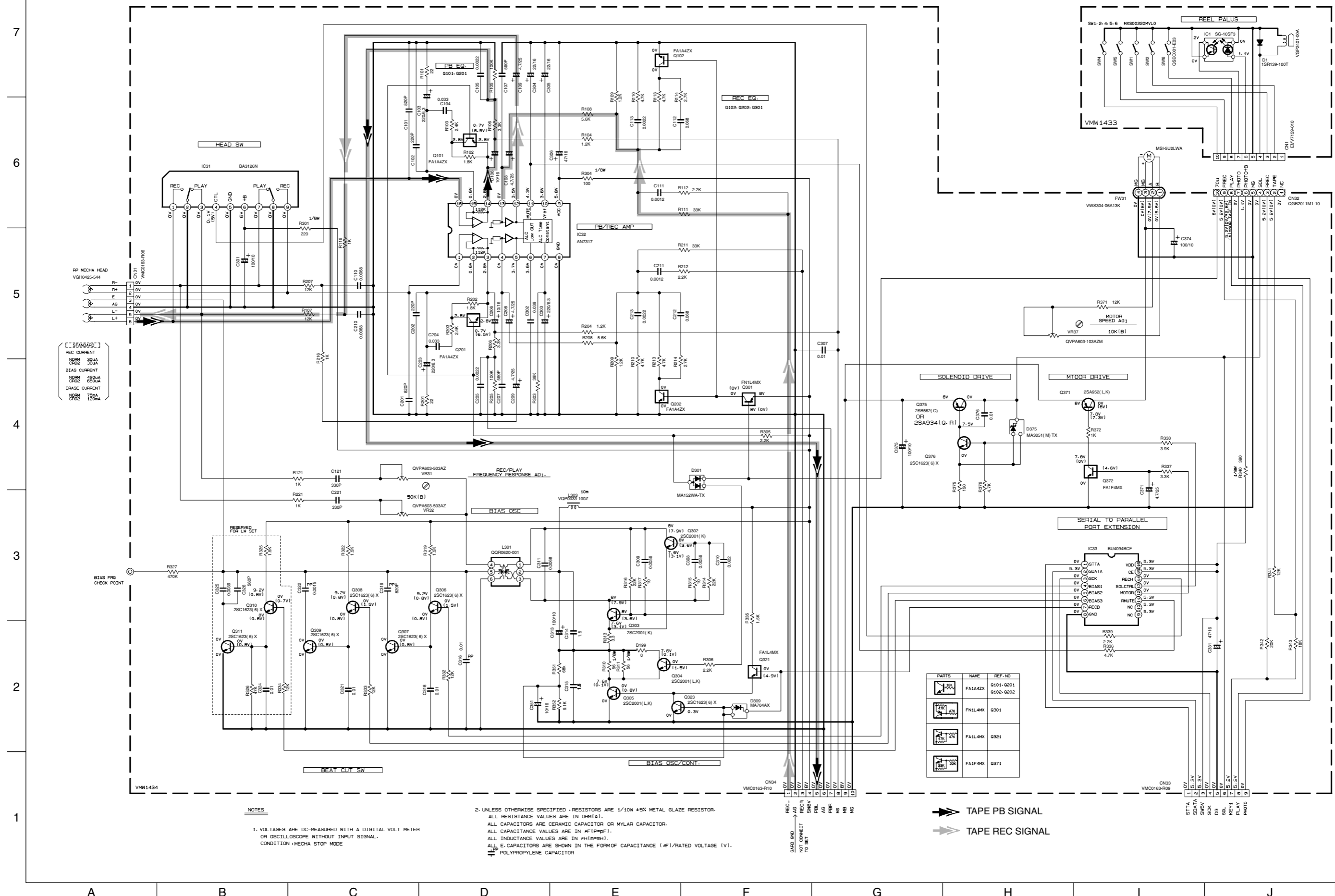
TABLE 1 VERSION COMPARISON (*MARK)

ITEM	R6144	C6135	C6113
D	470	6P	6SA2501F1-03
OTHER			

TO MICON SECTION (LVS10140-001A)

TO MAIN SECTION (LVS10141-001A)

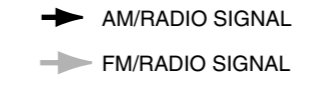
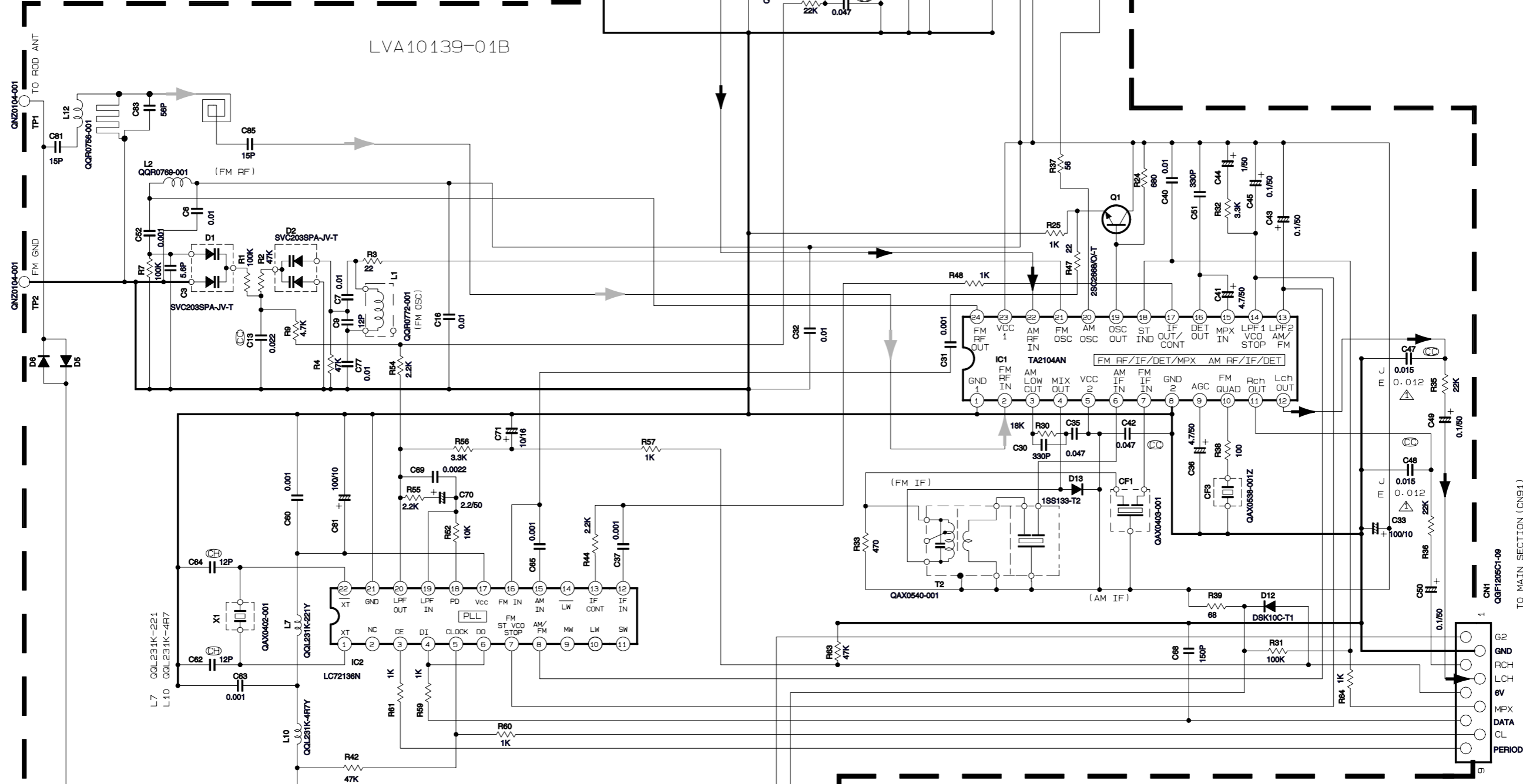
■ Cassette amplifire section



■ Tuner circuit

PIN NO	1	2	3	4	5	6	7	8	9	10	11	12	13	14	15	16	17	18	19	20	21	22	23	24
IC1	FM NO SIGNAL	0	0.6	0	3.6	4	3.5	4	0	0.6	3.2	1.2	1.2	3.4	3.3	0.7	1.4	1.2	0	3.9	4	4.1	4	4
	FM 600B STEREO	0	0.8	0.2	3.8	4.1	3.9	4.1	0	0	3.3	1.2	1.2	3.3	3.4	0.7	1.1	1.4	0.7	4	4.1	4.1	4.1	4.1
	AM 530KHZ NO SIGNAL	0	0	1	4.3	4.3	3.6	4.3	0	0.2	3.9	1.2	1.2	0	0	0.7	1.1	1.2	0.7	4.2	4.3	4.3	4.3	4.3
PIN NO	1	2	3	4	5	6	7	8	9	10	11	12	13	14	15	16	17	18	19	20	21	22		
IC2	FM NO SIGNAL	2.5	0	0	5.1	5.1	5.1	3.5	3.2	3.9	2.5	4.1	0	1.4	1.7	0	2.4	0	0.9	0.9	1.5	0	2	
TR NO																								
PIN NO	E	C	B																					
	AM 530KHZ NO SIGNAL	3.4	4.3	4.2																				
	AM 1440KHZ NO SIGNAL	3.4	4.3	4.2																				

- NOTES
1. VOLTAGES ARE DC-MEASURED WITH A DIGITAL VOLT METER
 2. ALL RESISTORS ARE 1/4W 5% CARBON RESISTOR.
 3. ALL RESISTANCE VALUES ARE IN OHM(Ω).
 4. ALL CAPACITANCE VALUES ARE IN #F(P=PF).
 5. ALL E-CAPS ARE SHOWN IN THE FORM OF CAPACITANCE (#F)/RATED VOLTAGE (V).
 6. ALL INDUCTANCE VALUES ARE IN #H(m=MH)



Printed circuit boards

■ Micom board

Block No. 0 2

7

6

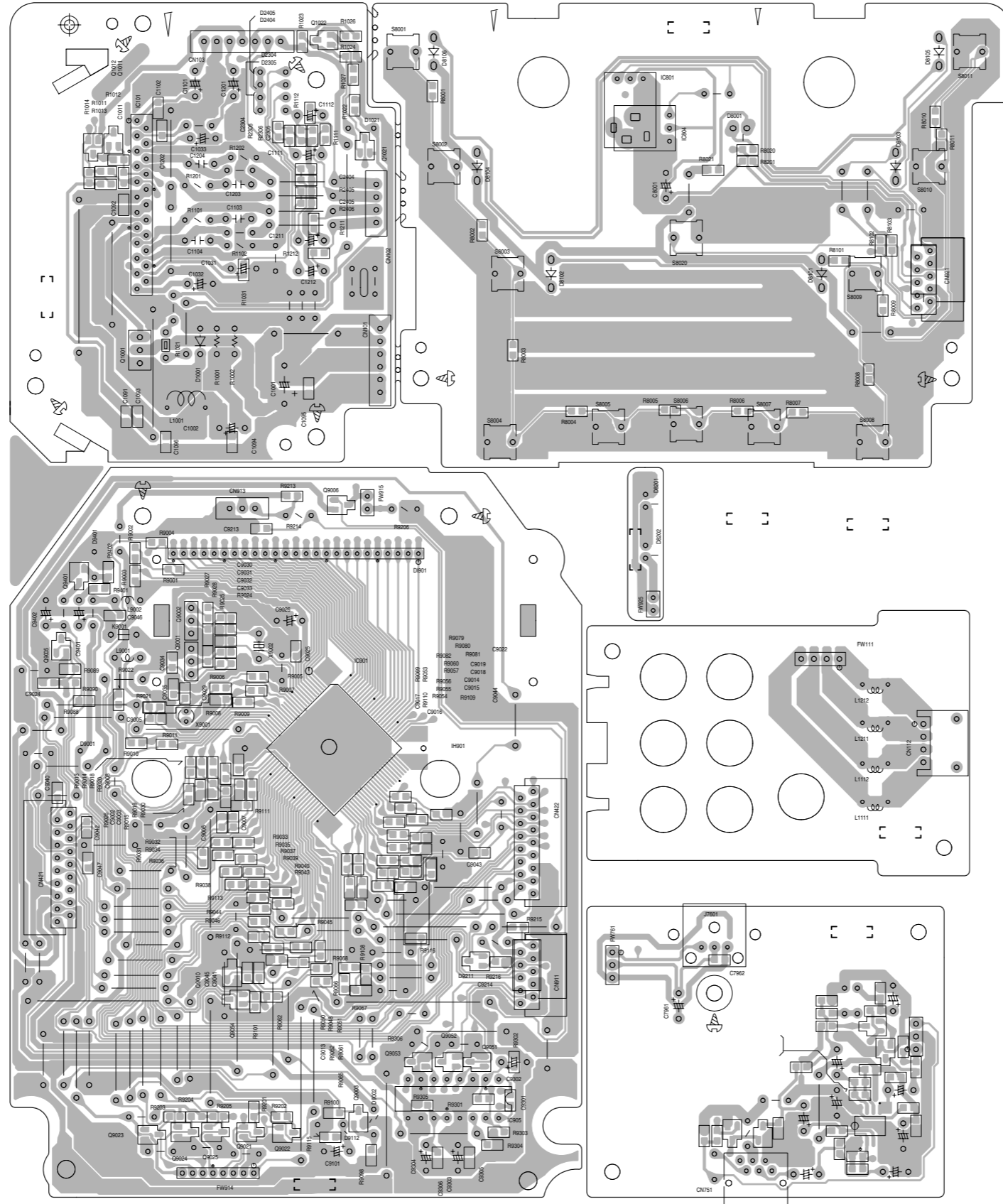
5

4

3

2

1



A

B

C

D

E

F

G

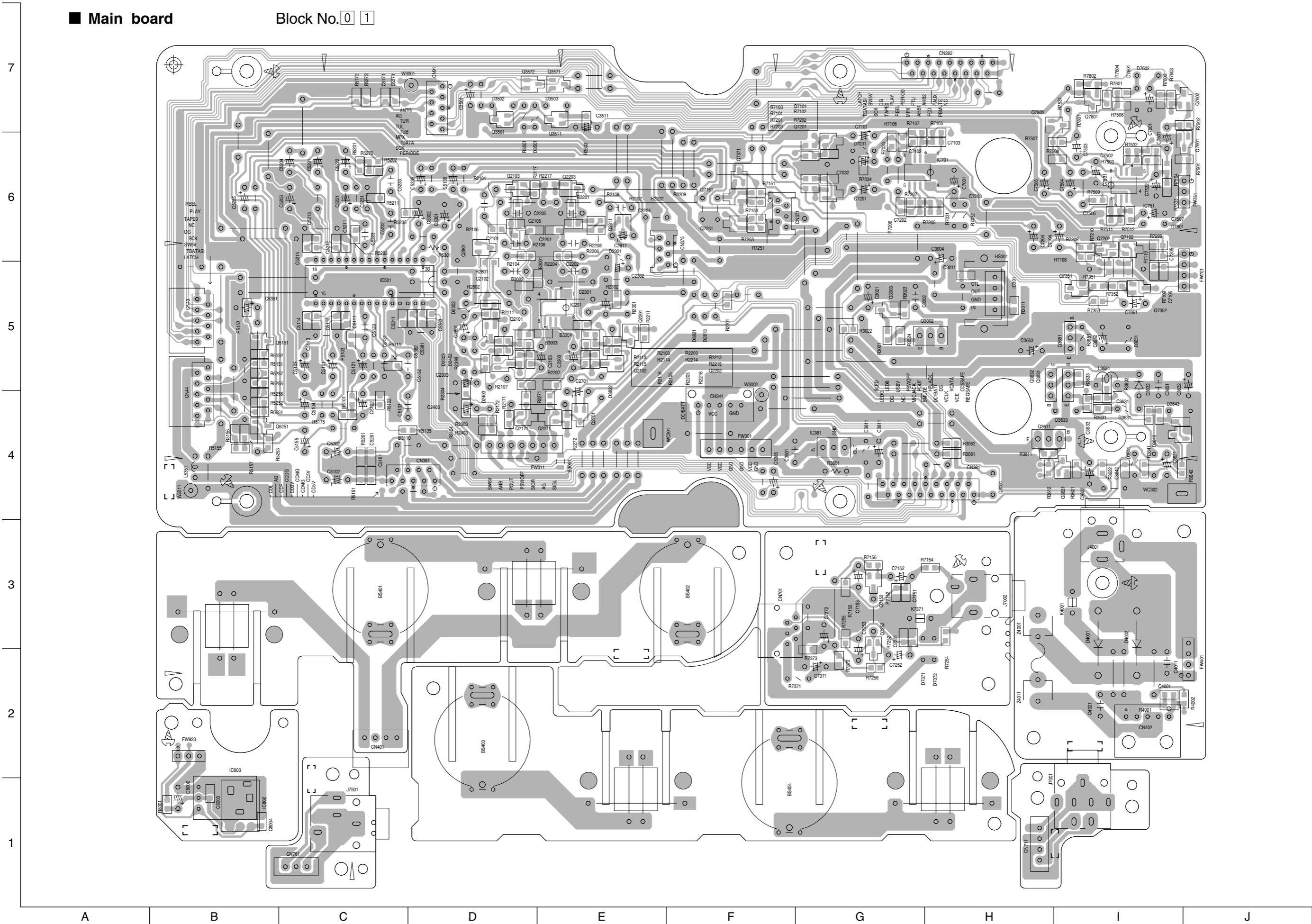
H

I

J

■ Main board

Block No. 0 1

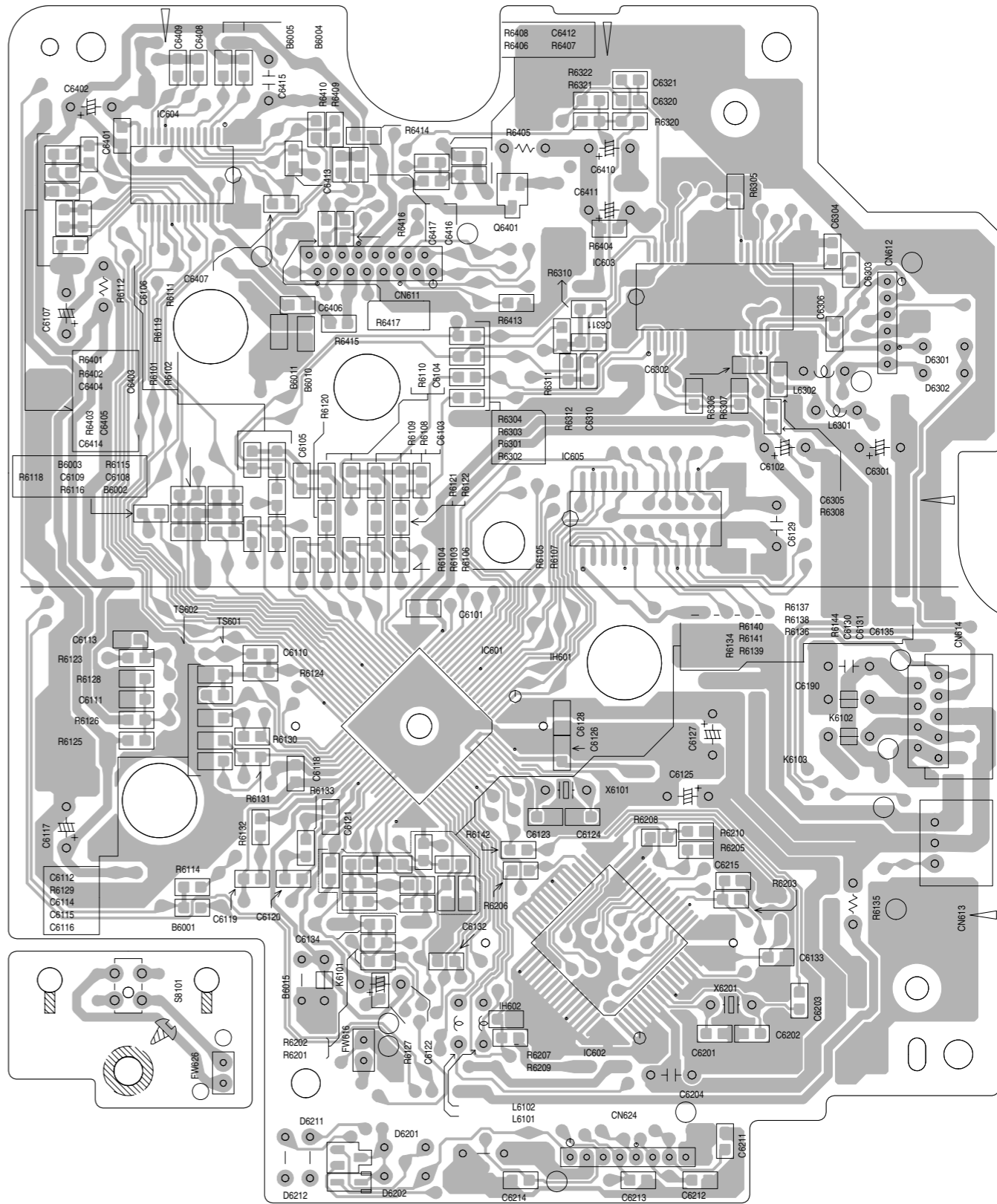
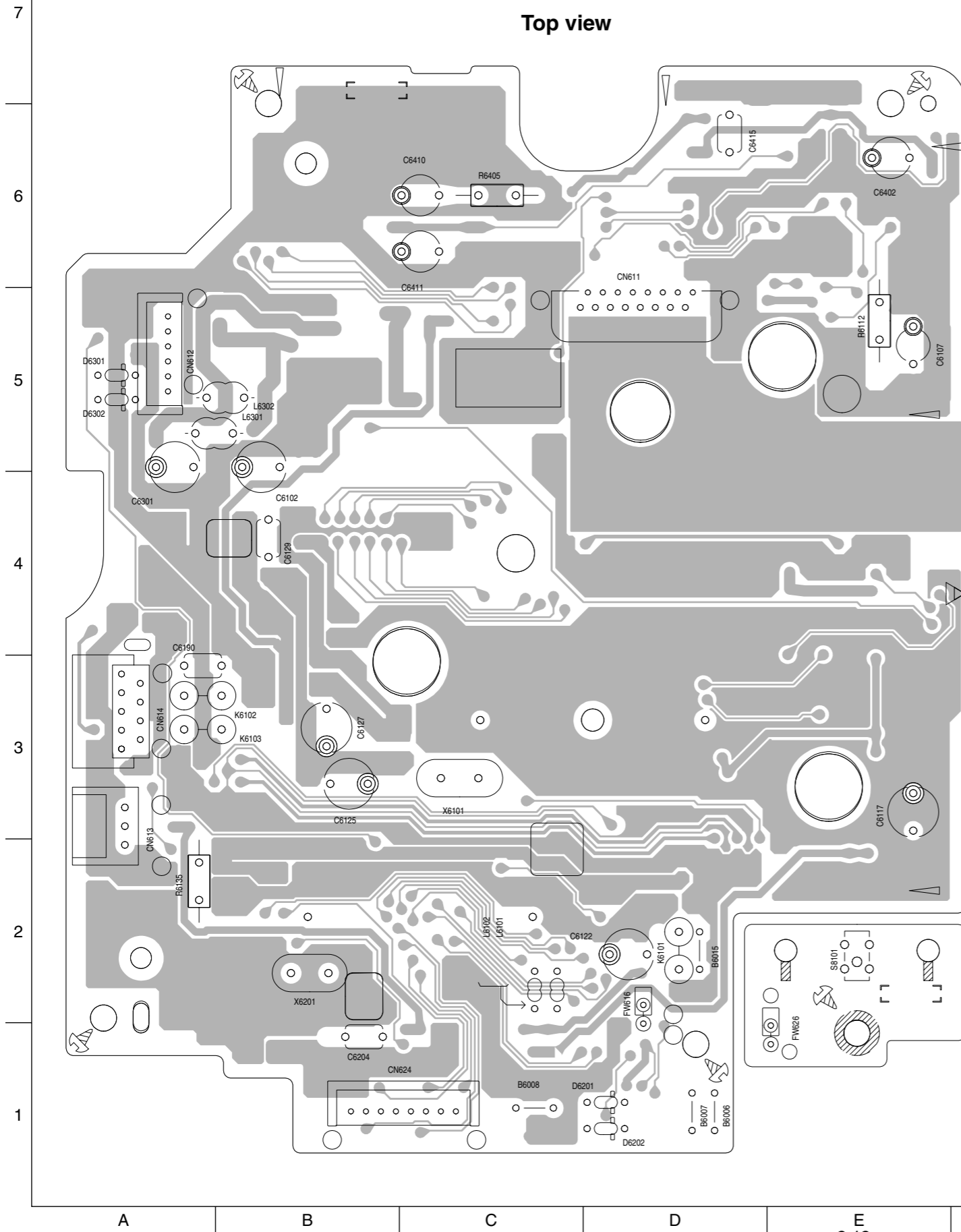


■ CD servo board

Block No. 0 3

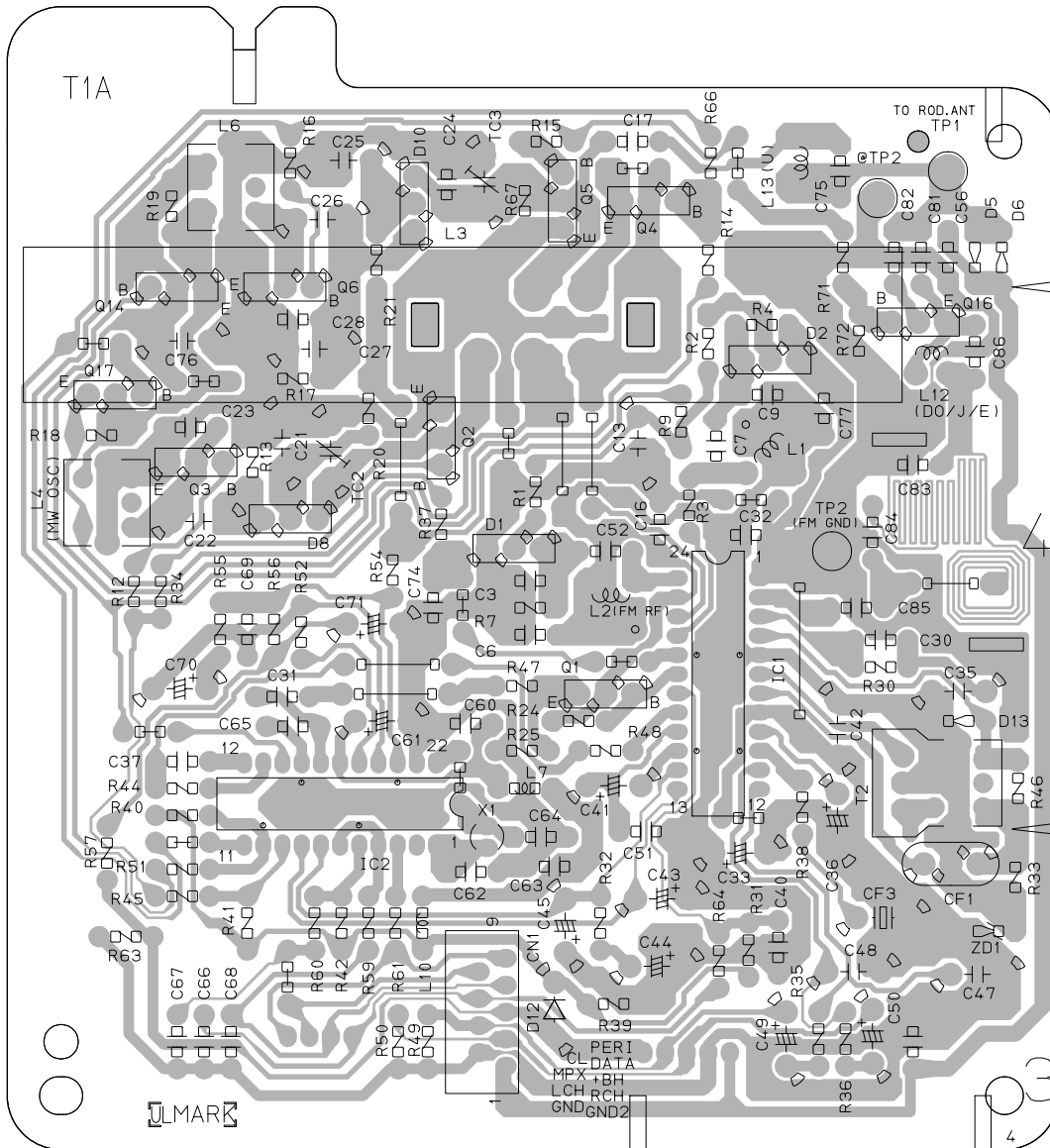
Top view

Bottom view



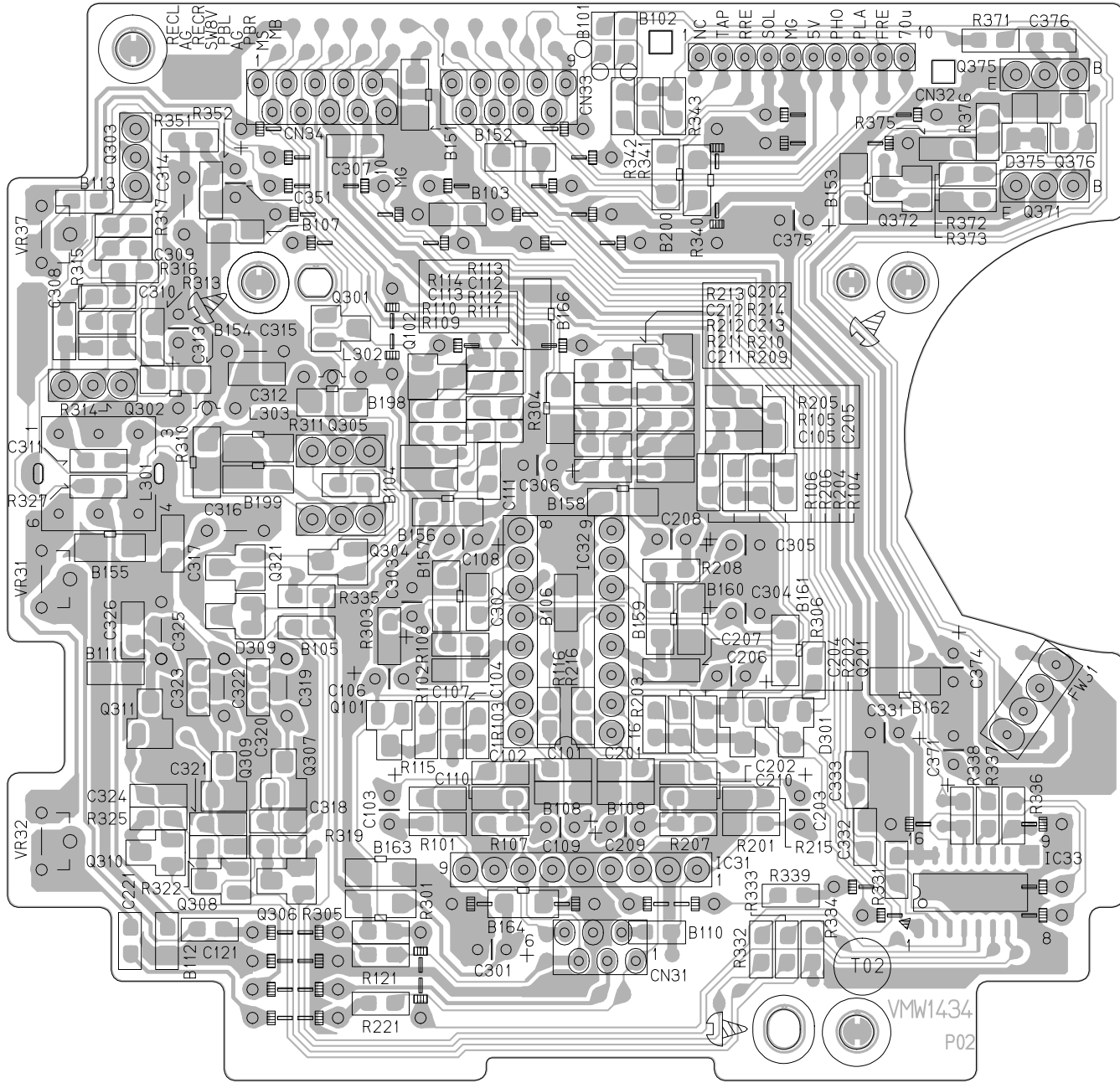
■ Tuner Board

Block No. 0 4



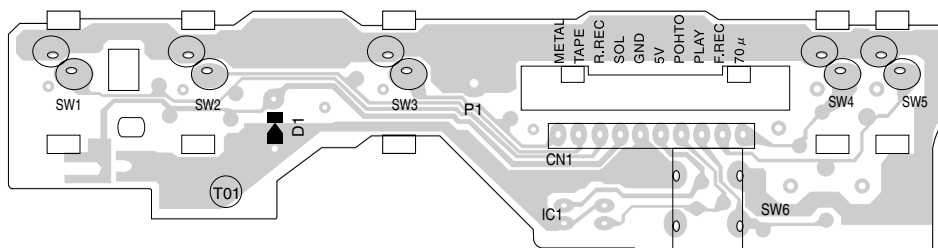
■ Head amplifier & mechanism board

Block No. 0 5



■ Cassette switch board

Block No. 0 6



— MEMO —